



Fire Communication Solutions



# LIBERATOR **MAX**

Tough. Reliable. Wireless



No Syncing / Pairing



Easy Install (1 box)



Up to 7 Positions with  
16 Talk-Group Channels



Truck-to-Truck Intercom

# Specifications

## Wireless Features

## CSB-900MAX / CSB-901MAX

|                    |                                    |
|--------------------|------------------------------------|
| Range              | Up to 1500 feet / Up to 450 meters |
| Frequency Range    | 902-928 MHz / 863-865 MHz          |
| Max Transmit Power | 620mW EIRP / 10mW EIRP             |
| Modulation         | u-LAW / ADPCM                      |
| Start Up Time      | Less than 3 seconds                |

## Wireless Headset Features

|                              |                                       |
|------------------------------|---------------------------------------|
| Heavy Duty Durable Design    | Rugged build quality, 2 year warranty |
| Styles                       | Behind-the-Head, Vented               |
| Radio                        | Mobile & Portable Radio Compatible    |
| Communication                | (Optional PRAC cable)-Portable Radio  |
| Noise Reduction Rating (NRR) | 23dB                                  |
| Base Station Required?       | Yes, 1 Installed Component            |

## Power

|                    |  |
|--------------------|--|
| Battery Life       | Up to 15 hours   |
| Charge Time        | 4 hours from discharged state                                      |
| Battery Type       | li-Poly  |
| Charge Source      | 5-14V  |
| Versatile Charging | Headset will operate while plugged into power without interruption |

## Compatible with a wide array of mobile radios:

Motorola, Harris-MA/COM, Kenwood, ICOM  
(inquire for more information) Full list: [Here](#)

Vented Headset  
Available with Ambient  
Noise Passthrough

**Setcom**<sup>®</sup>

<https://setcomcorp.com>



# LiberatorMAX™ Configuration and Pricing

| <b>Step 1</b>  | <p><b>Master Station</b><br/>Part #: MS-900MAX</p>  | <p><b>Quantity</b><br/><br/>1<br/>_____</p>     |   |                                  |  |  |  |  |   |   |   |  |   |
|--|---|---|--|----------------------------------|--|--|--|--|---|---|---|--|---|
| <b>Step 2</b>  | <p><b>Number of Radio-Transmit Headsets<sup>a</sup></b><br/>Part #: CSB-900MAX Kit</p>  | <p><b>Quantity</b><br/><br/>_____<br/>_____</p> |   |                                  |  |  |  |  |   |   |   |  |   |
| <b>Step 3</b>  | <p><b>Number of Intercom-Only Headsets<sup>a</sup></b><br/>Part #: CSB-901MAX Kit</p>   | <p><b>Quantity</b><br/><br/>_____<br/>_____</p> |  |                                  |  |  |  |  |   |   |   |  |   |
| <b>Step 4</b>  | <table border="1"> <thead> <tr> <th colspan="2" data-bbox="251 1207 1136 1302"><b>Radio Cable<sup>b,c</sup></b></th> <th data-bbox="1144 1207 1299 1302"></th> <th data-bbox="1307 1207 1607 1302"><b>Full Compatability List: <a href="#">Here</a></b></th> </tr> </thead> <tbody> <tr> <td data-bbox="251 1312 625 1543"> <p><i><b>Motorola<br/>APX/XTL Series</b></i><br/>Part #: RC-18MU4K</p> </td> <td data-bbox="633 1312 998 1543"> <p><i><b>Motorola<br/>XPR Series</b></i><br/>Part #: RC-15MU5</p> </td> <td data-bbox="1006 1312 1299 1543" rowspan="2"> <p><b>Quantity</b><br/><br/>1<br/>_____</p> </td> <td data-bbox="1307 1312 1607 1543" rowspan="2"> <p><b>Radio Cable<br/>Part #</b><br/><br/>_____</p> </td> </tr> <tr> <td data-bbox="251 1554 625 1785"> <p><i><b>Harris<br/>XG Series</b></i><br/>Part #: RC-18GTE</p> </td> <td data-bbox="633 1554 998 1785"> <p><i><b>Kenwood<br/>NX Series</b></i><br/>Part #: RCB-18KW</p> </td> </tr> </tbody> </table> |   |  | <b>Radio Cable<sup>b,c</sup></b> |  |  | <b>Full Compatability List: <a href="#">Here</a></b> | <p><i><b>Motorola<br/>APX/XTL Series</b></i><br/>Part #: RC-18MU4K</p> | <p><i><b>Motorola<br/>XPR Series</b></i><br/>Part #: RC-15MU5</p> | <p><b>Quantity</b><br/><br/>1<br/>_____</p> | <p><b>Radio Cable<br/>Part #</b><br/><br/>_____</p> | <p><i><b>Harris<br/>XG Series</b></i><br/>Part #: RC-18GTE</p> | <p><i><b>Kenwood<br/>NX Series</b></i><br/>Part #: RCB-18KW</p> |
| <b>Radio Cable<sup>b,c</sup></b>                                       |   |   | <b>Full Compatability List: <a href="#">Here</a></b>                                 |                                  |  |  |  |  |   |   |   |  |   |
| <p><i><b>Motorola<br/>APX/XTL Series</b></i><br/>Part #: RC-18MU4K</p> | <p><i><b>Motorola<br/>XPR Series</b></i><br/>Part #: RC-15MU5</p>   | <p><b>Quantity</b><br/><br/>1<br/>_____</p>     | <p><b>Radio Cable<br/>Part #</b><br/><br/>_____</p>                                  |                                  |  |  |  |  |   |   |   |  |   |
| <p><i><b>Harris<br/>XG Series</b></i><br/>Part #: RC-18GTE</p>         | <p><i><b>Kenwood<br/>NX Series</b></i><br/>Part #: RCB-18KW</p>   |   |  |                                  |  |  |  |  |   |   |   |  |   |

<sup>a</sup> There can be no more than 7 total headsets in a system

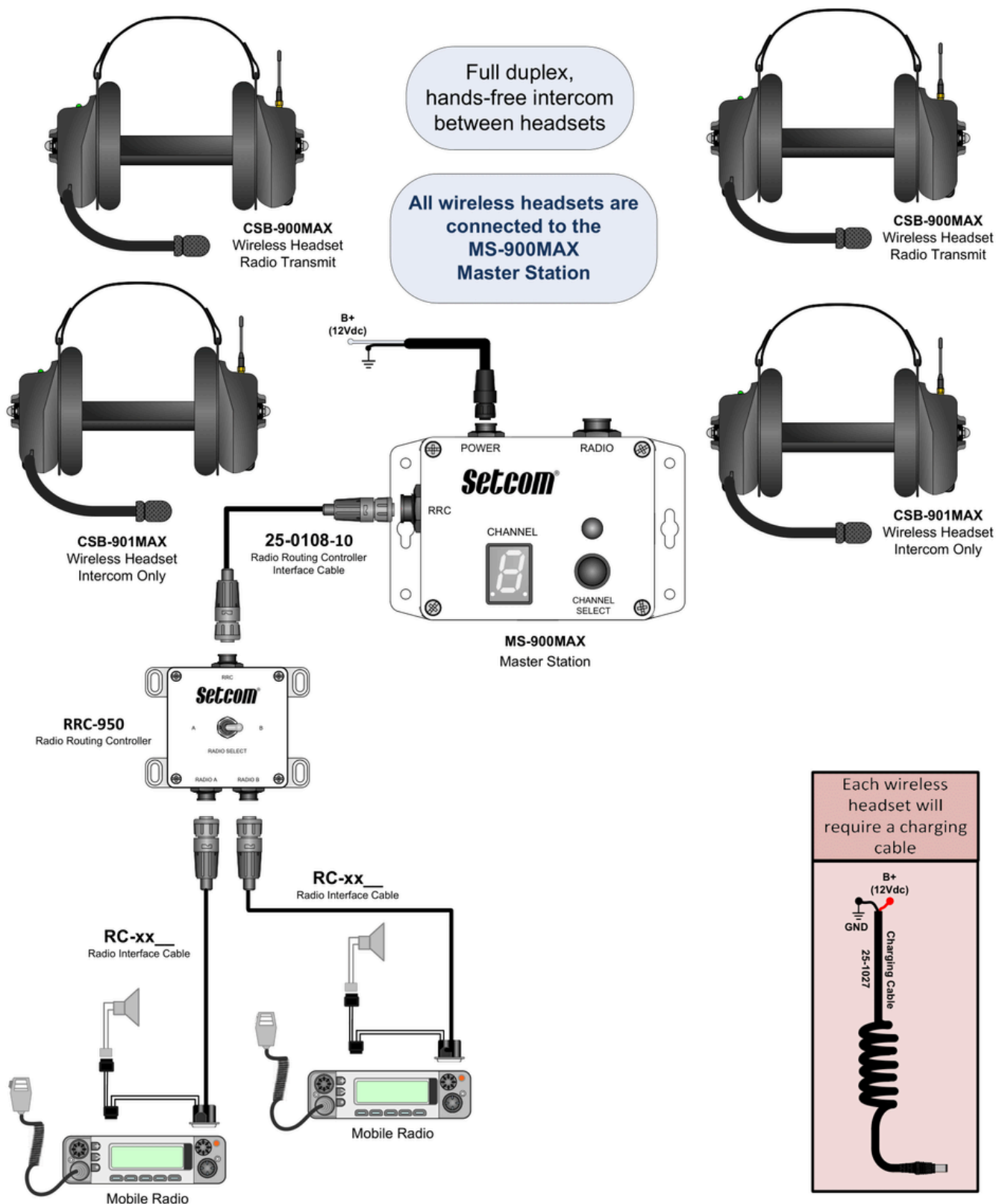
<sup>b</sup> Call Setcom for other radio cables not listed

<sup>c</sup> Call Setcom if two radios are needed



# 4 Crew Wireless System (Dual Mobile Radios)

## MS-900MAX



# 5 Crew Hybrid (Wired/Wireless) System

## MS-950MAX

